

UniFi UISP Branding

Q UDB-Pro-EU

Switching

WiFi

Camera Security

Door Access

CloudKeys & Gateways

Power Tech

Inte

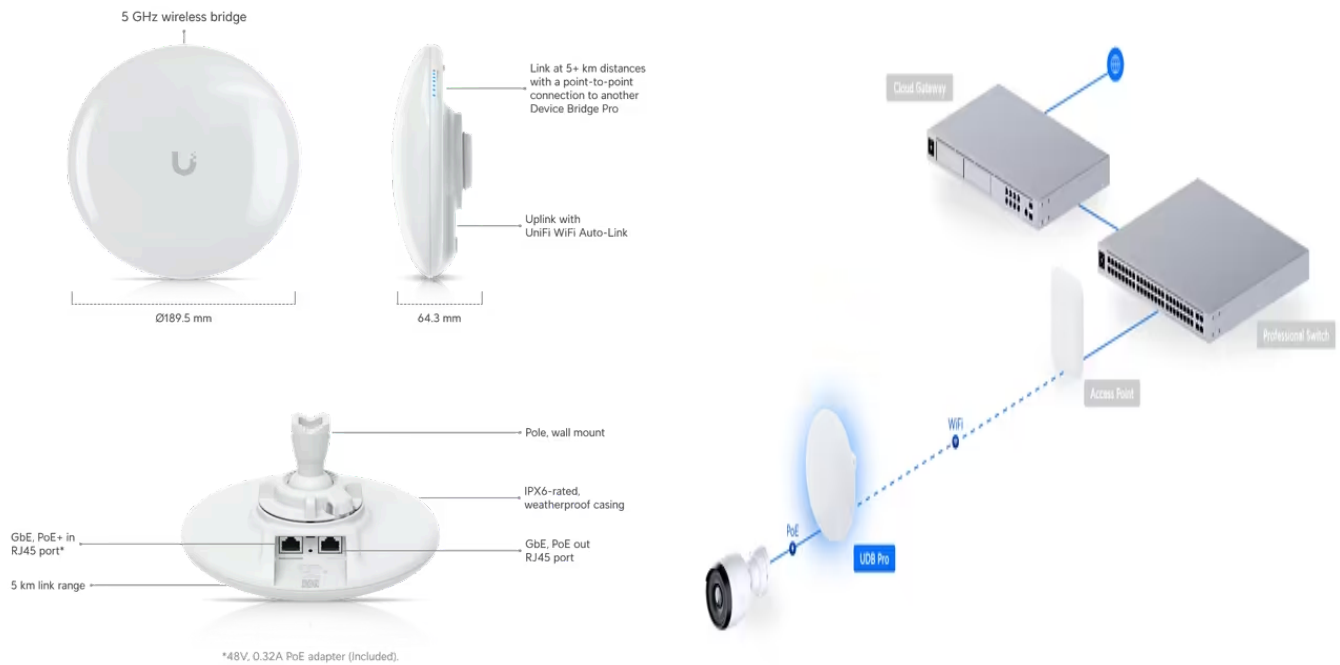
Device Bridge > [Device Bridge Pro](#)

Datasheet

In The Box

Marketing Images

Installation Guide



Mechanical

Dimensions	Ø189.5 x 64.3 mm (Ø7.4 x 2.5")
Weight	Without mount: 431 g (1 lb) With mount: 515 g (1.1 lb)
Enclosure material	UV-resistant polycarbonate
Mount material	UV-stabilized polycarbonate, stainless steel
Pole mount diameter	20–53.1 mm (0.8–2.1") on pipe outer diameter
Wind loading	69 N at 200 km/h (15.5 lbf at 125 mph)

Weatherproofing IPX6

Hardware

Networking interface	(2) GbE RJ45 ports
Management interface	Ethernet WiFi
PoE interface	(1) PoE in (PoE output not used) (1) Passive PoE output
Power method	PoE PoE+ (Required for PoE output)
Power supply	UniFi PoE switch 48V, 0.32A PoE adapter (Included)
Supported volatage range	42.5–57V DC
Max. power consumption	9W
Max. TX power	
2.4 GHz	-
5 GHz	25 dBm
6 GHz	-
Max. data rate	
2.4 GHz	-
5 GHz	867 Mbps (BW80)
6 GHz	-
MIMO	
2.4 GHz	-
5 GHz	2 x 2
6 GHz	-
Antenna gain	
2.4 GHz	-
5 GHz	19 dBi
6 GHz	-
Antenna	Internal
Range	5+ km
LEDs	Power, Ethernet, (4) signal strength
Button	Factory reset
Mounting	Pole (Included)

Ambient operating temperature	-40 to 60° C (-40 to 140° F)
Ambient operating humidity	5 to 95% noncondensing
Certifications	CE, FCC, IC

Software

WiFi standards	802.11a/n/ac
Wireless security	WPA2 AES (Always On)
Operating frequency* US/CA	U-NII-1 5150 - 5250 MHz U-NII-2A 5250 - 5350 MHz U-NII-2C 5470 - 5725 MHz U-NII-3 5725 - 5850 MHz
Worldwide	5150 - 5875 MHz <small>*Depends on regulatory region.</small>
Channel bandwidth	20/40/80 MHz
Max. conducted TX power	25 dBm (Combined)
Modulation	BPSK (1/2), QPSK (1/2), QPSK (3/4), 16QAM (1/2), 16QAM (3/4), 64QAM (2/3), 64QAM (3/4), 64QAM (5/6), 256QAM (3/4), 256QAM (5/6)

Stay in Touch

[Terms of Service](#) | [Privacy Policy](#) | [Legal](#) | [Cookies Settings](#)

© 2024 Ubiquiti, Inc. All rights reserved.