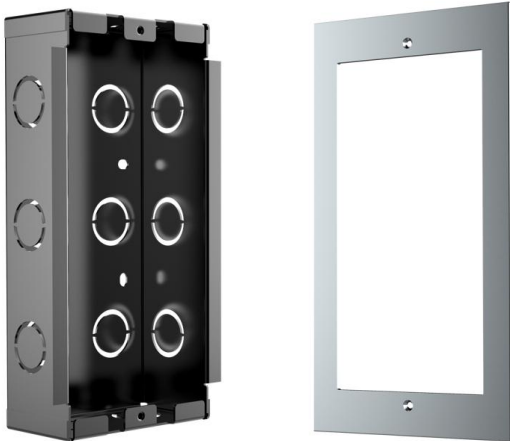




## EX101&EX102 Flush Mounting Accessories

EX101&EX102 is a Flush Mounting accessory package (Optional accessories) when the doorphone needs to be Flush Mounting. It is suitable for a variety of Fanvil i61~i64 series doorphone, which is easy to install and save space.

### Product renderings



### Product specification

Model	EX101	EX102
Applicable models	i61	i62&i63&i64
Product dimension	Frame Panel : 199.7*112*3mm Brick Box : 182.3*108.6*50.3mm	Frame Panel : 216.8*112*3mm Brick Box : 198.6*106.6*50.3mm
Material	Aluminum alloy & SGCC	Aluminum alloy & SGCC
Working temperature	-40~70°C	-40~70°C
Package dimensions	210*128*59mm	227*129*61mm
Outer CTN dimensions	315*272*230mm	325*280*247mm
Number / Box	10PCS	10PCS
Weight	Frame Panel : 70.2g Brick Box : 400.1g	Frame Panel : 77.3 g Brick Box : 425.9g

The above specifications may be updated in the future without prior notice. All hardware/software/physical features should be based on the final shipped products. For more information, please visit: [www.fanvil.com](http://www.fanvil.com)

Website: [www.fanvil.com](http://www.fanvil.com)

Add: 10/F Block A, Dualshine Global Science Innovation Center, Honglang North 2nd Road, Bao'an District, Shenzhen, China

Tel: +86-755-2640-2199 Fax: +86-755-2640-2618 Email: [sales@fanvil.com](mailto:sales@fanvil.com)

